

Date: September 2008
Volume 1 Issue 14

Lancashire Care NHS Foundation Trust
Library & Information Service
Lantern Centre, Vicarage Lane, Preston, PR2 8DY
Tel: 01772 773510
Web: <http://lancashirecare.wordpress.com>
Email: academic.library@lancashirecare.nhs.uk

Lancashire Care Lifting the Lid on Mental Health Information



Current Awareness in Mental Health



Carmel Jackie Viv Sue
The Library Team

Keep Up-to-date with Current Mental Health Information at our new Portal:
<http://lancashirecare.wordpress.com> available 24hours a day

Lancashire Care Foundation Trust Goes Global with new Mental Health Portal for all Staff and Users



Back To School!

Study Guides

2008 Part 1 Writing assignments how to deconstruct an essay title
2008 Part 2 Writing assignments effective research skills

Click on the article titles to gain full-text access

For training, advise on how to access Journals, Ebooks or Athens username & password
please email: susan.jennings@lancashirecare.nhs.uk

If you would like any of the articles featured in this bulletin please email or call. There is now an [Archive of Past Issues](#) available click on this link.

Journal Articles

Lloyd, C et al, (2008) British Journal of Occupational Therapy, 71(8) 321-328
[Conceptualising recovery in mental health rehabilitation.](#)

Kaltenhaler, E et al (2008) British Journal of Psychiatry, 193 (3) 181-184
[Computerised CBT for depression.](#)

Brunero, S et al (2008) Journal of Psychiatric & Mental Health Nursing 15, 588-594
[Health professionals' attitudes towards suicide prevention initiatives.](#)

Hill, H (2008) Journal of Dementia Care, 16 (4) 21-24
[Talk but no walk: Barriers to person-centered care.](#)

Wild, J & Gur, R.C. (2008) British Journal of Psychiatry, 3193 (3) 254-255
[Verbal memory & treatment response in post-traumatic stress disorder.](#)

Hambrook, D et al. (2008) British Journal of Clinical Psychology, 47(3) 335-9
[Empathy, systemizing and autistic traits in anorexia nervosa: A pilot study.](#)

Ventress, M.A. et al (2008) Advances in Psychiatric Treatment, 14(5) 369-81
[Keeping PACE: Fitness to be interviewed by the police.](#)

Luty, J et al (2008) Psychiatric Bulletin 32 (9) 327-332
[The repentant sinner: Methods to reduce stigmatized attitudes towards mental illness.](#)

Reports/Documents



Latest News
Alzheimer's Disease & Dementia
Annual Evidence Update 2008

Don't miss this opportunity to look at the latest evidence, compiled by NLH

Survey of Users of Mental Health Services, Healthcare Commission

The survey included 68 NHS trusts that provide secondary mental health services (including combined mental health and social care trusts, & primary care trusts that provide mental health)

Cochrane - Physical Activity Programs for Persons with Dementia

There is some evidence that physical activity delays the onset of dementia in healthy older adults and slows down cognitive decline to prevent the onset of cognitive disability

Latest Briefings from

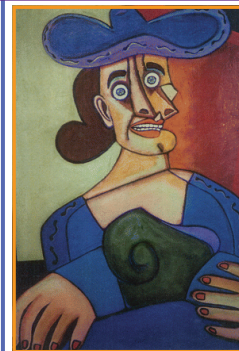


Sainsbury Centre for Mental Health

Police & Mental Health

Evening the Odds
Ethnic mental health

Focus on Psychosis & Schizophrenia



Top of the Charts

Top 25 Hottest
Articles from **Schizophrenia Research** April - June 2008

Most Read Article - Social skills training as nursing intervention

to improve the social skills and self-esteem of inpatients with chronic schizophrenia *Archives of Psychiatric Nursing, Vol. 21 (6), December 2007, p.317-326*

OT - Participation by doing: Social interaction in everyday activities among persons with schizophrenia
Scandinavian Journal of Occupational Therapy, Vol.15 (3) 2008 p 162-172 (11)

Reinforcement and reversal learning in first-episode psychosis
Schizophrenia Bulletin 2008 34(5):848-855

First Episode Psychosis: A literature review
International Journal of Mental Health Nursing, Vol. 17 (2), Pages 85 - 91

Duration of untreated psychosis and social function: 1 year follow-up-study of first episode schizophrenia *The British Journal of Psychiatry (2008) 193: 203-209*

Schizophrenia Annual Evidence Update 2008 from the NLH, just click here for all your **Evidence Needs ..**